



ella

40516

Stylish elegance with harmonious curves - **ella** 40516 is a celebration of design. Filigree metal legs visually round off the appearance. This armchair is a stylish accent piece in any design-orientated room. Design: Müller Wulff



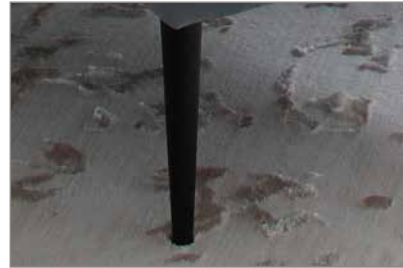
ARMCHAIRS



M55
armchair

84/83/79/44

fire protection =
BK15 (surcharge)



Combined covers

This model can also be supplied in combined cover qualities and cover colours. See order information and image.

Contrast thread

This model is available in leather and some fabric colours with contrasting colour thread on request at no extra charge.

Metal colours for legs

All legs can be ordered in glossy chrome, silver or black. Please specify the desired look.

„Flame retardant“

Optionally, the „flame-retardant“ version of this model can be ordered (art. no. = BK ..). **Please specify when ordering.**

ORDER INFORMATION

Combined covers:

This model can also be supplied in a combination of different cover qualities. This is shown at the image and at the price list.

Price 1: back outside

Price 2: seat and back inside

Back sides of sofas:

All pieces are genuinely upholstered at the back.

Contrasting thread:

This model is available in leather and some fabric colours with contrasting colour thread at no extra charge. You will find the specified colours in our fabric/leather trolley. Please state the no., otherwise tone-in-tone will be delivered.

Seam appearance:

Decorative, felled or double seams may appear different in fabric and leather versions. For manufacturing reasons, seams may be left out of the fabric version or replaced with simple

seams.

Thread implementation:

The model is available in the thread implementation standard or with contrasting-coloured pearl-thread contrasting thread (nicely twisted thread). If you do not indicate something when ordering, you receive the standard thread. If you indicate the contrasting thread, you automatically receive the pearl thread.

All of the dimensions given are approxima-

te dimensions in cm in width/depth/height/ seat height. We reserve the right to make changes.

Seat depth armchair: approx. **56 cm**

Armpart width: approx. **14 cm**

Model-related feature:

The upholstery is deliberately processed casually to create a certain visual appearance. Waving is not a quality defect, but a model-related feature that ensures optimum seating

comfort.

Please note:

Special designs may be made on some elements in return for an extra charge. Please consult us. We are happy to make your dreams come true.

Digital fabric/leather and colour samples:

The visual appearance of the covers and colour samples may vary, samples in accordance - colour and structure deviations possible.

LEGS



metal leg, **diff.**
metal col.

F S1

Metal colours:

The leg is available in different metal colours.
Please indicate when ordering.

Powder coated:

The colours silver M21 and black M99 are
powder coated.
Different leg heights:
The leg heights of the armchair are approx.

19 cm at the front and approx. **17 cm** at the
back, depending on the frame.

Legs and floor protection:

With slim furniture legs with a small gliding

surface, there is increased pressure on the
floor. We recommend fitting glides or an
underlay to protect against scratches and
pressure marks on sensitive floors.

AVAILABLE METAL COLOURS



high-gloss
chrome

M20



silver

M21



black

M99

ella

40516

- Item no. and cover
- Flame retardant version (surcharge)
- Metal colour for legs
- Contrasting thread



W.SCHILLIG
OBJECTS

UPHOLSTERED FURNITURE FRAME STRUCTURE



The design of the cross-section shown here is based on a sample and serves to illustrate the upholstery structure.

- 1. Frame** - beech wood construction, wood materials
- 2. Seat suspension** with permanently elastic wave springs
- 3. Seat upholstery structure** of er-go-PUR-foam with diolen cover
- 4. Back suspension** due to upholstery strap
- 5. Back upholstery structure** of er-go-PUR-foam with diolen cover

www.schillig-objects.com



UPHOLSTERED FURNITURE QUALITY

Upholstered furniture from passion.

For almost 75 years, this passion has led to the creation of high-quality and special pieces of furniture and designer furniture - sofas that combine elegant and contemporary design with first-class comfort. We stand for craftsmanship, trend-setting ideas, appealing design and know-how from Germany. The result is upholstered furniture with guaranteed first-class comfort and attention to detail. When selecting the materials used, we pay attention to sustainability and the conservation of resources.

- Traditional craftsmanship down to the last detail
- High-quality, environmentally friendly materials
- Careful & precise workmanship
- Cooperation with renowned furniture designers
- Production according to DIN & RAL quality guidelines of the Deutsche Gütegemeinschaft Möbel e.V.
- Regularly tested product quality „Made in Germany“
- Development at the Upper Franconian location in Ebersdorf near Coburg
- Carefully selected fabric and leather cover collections in many colours for a wide range of requirements.



quality
Made in Germany

W.SCHILLIG objects
GmbH & Co. KG
Am Weinberg 20 - 22
96237 Ebersdorf bei Coburg
GERMANY
Telephone: +49 9562 37-0
Telefax: +49 9562 37-500
E-Mail: info@schillig-objects.de


W.SCHILLIG
OBJECTS